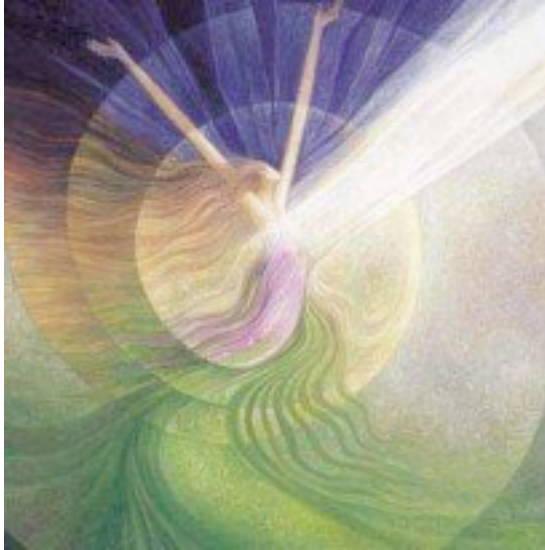


A Journey Through The Five Domed Chambers of the Sound and Light Temple

Each of these domes of the sound and light temple represent a mythic gateway to a different stage of human evolution that can be ceremonially and initiatory moved through to activate an accelerated sacred, geometric encodement and form of spiritual evolution. The Initiatory domes and gates are as follows: Self-Love, Self-Empowerment, Self-Reflection, Self-Embodiment and Self-Transcendence.



The first chamber is the dome of Self-Love. This is a chamber that has both an above ground element, the Temple of the Open Heart and an underground chamber that is reached via a spiral staircase. In the underground section the initiate moves amidst marble columns, opulent baths, waterfalls and ferns, a priest/ess assists the initiate with a ceremonial bath to intentionally wash away that which is incoherent with divine essence. When complete, they help the initiate select intuitively from the mythic, archetypal wardrobe closets surrounding the baths, a mythic vestiment which expresses their home vibration, frequency and representation of their primary star lineage. Each gate of this journey is attended by a priest/ess to assist the initiate in absolutely knowing and honoring the truth of their most expanded expression. This dome is guided by the consciousness of water and the chalice and focuses on the clearing of the emotional body. For

some, the water process will be the height of their experience, for others it will mark the beginning of time spent in the precincts of the initiatory Mystery.

Next, if prepared, the initiate will be taken to the second Dome of Self-Empowerment. This is the initiatory gateway of the divine fire that lives within, the fire that animates all creative empowerment. This dome is guided by the consciousness of fire and the priest/ess' focus on the clearing of the mental body. There are four alcoves with different experiences and awareness' about empowerment and a central dais that creates a space for archetypal exchanges with the archetypal energy with which the initiate is being empowered.



The next Dome honors the gate of Self Reflection. This dome is guided by the element air and the sword, and focuses on the clearing of the etheric body. This dome holds a Hall Of Mirrors, where archetypal players are playing behind the two-way mirrors to the expansion and illumination of the consciousness of the participant player. This room has to do with discovering one's "true identity," moving beyond and seeing through the apparent illusions that stand in the way of being the authentic self.

Next is the dome and gate of Self-Embodiment, which is guided by the element Earth, the sacred tool of the light shield and focuses on the clearing of the physical body. Within it is a large open area with a dazzling crystal chamber attached to this room that may be revealed during the initiation in this gateway. This area is the place of demonstration of the initiate's gifts of chosen embodiment in this lifetime.



[Amoraea Dreamseed](http://www.amoraea.com) www.synergisiscode.com

Copyright pending 2008, The 13 Moon Oracle: Ariel Spilsbury, www.holographicgoddess.com. All rights reserved. No part of these pages, either text or images, may be used for any purpose other than personal use. Therefore, reproduction, modification in any forms or by any means, electronic or mechanical or otherwise is strictly prohibited without prior written permission. Thank you & Blessed Be

The central area is the chamber of Self Transcendence. This dome is guided by the element “aether” or the spirit and is for the clearing and unification of the elements and life streams, "christed-over soul pattern" of the causal body. It is a golden dome with a retractable covering that can open to the night for evening ceremonies. This chamber is in perfect alignment with the heliacal rising of Sirius and the vernal equinoxes and solstices, which illuminate different aspects of the truth that is held in the simplicity of light. This is the final gateway/chamber where initiates are taken for Vision Quest, communion and initiation directly with the Divine. Often initiates are left there for three days or more in this process. This is a chamber of dazzling beauty, inlaid marble floors with sacred geometry, crystal geometries and the interface of color, light and holographic sound. In the center is a huge brazier with a blue/violet flame honoring the Great Central Sun and our origins in the triple flame of transmutation. Here initiates are assisted in dropping all identifications, all roles, all mental understanding, asked to offer such identification to the transmuting fires that they can become all that they are, in their native divinity: a transparent divine child, co-creator with the Divine Source. Here initiates experience the divine fire directly in initiation due to the resonant frequency that is carefully maintained in this sacred space. Finally initiates are taken to dream recollection chambers to integrate, illuminate and honor the processes they have been taken through in initiation. *Needless to say, as these are mystery initiations, these descriptions are the merest hints of the sacred technologies that are held within these sacred spaces and more importantly, in the hearts of the priest/less that are coded and trained to maintain its resonant frequency, for the One Heart.*

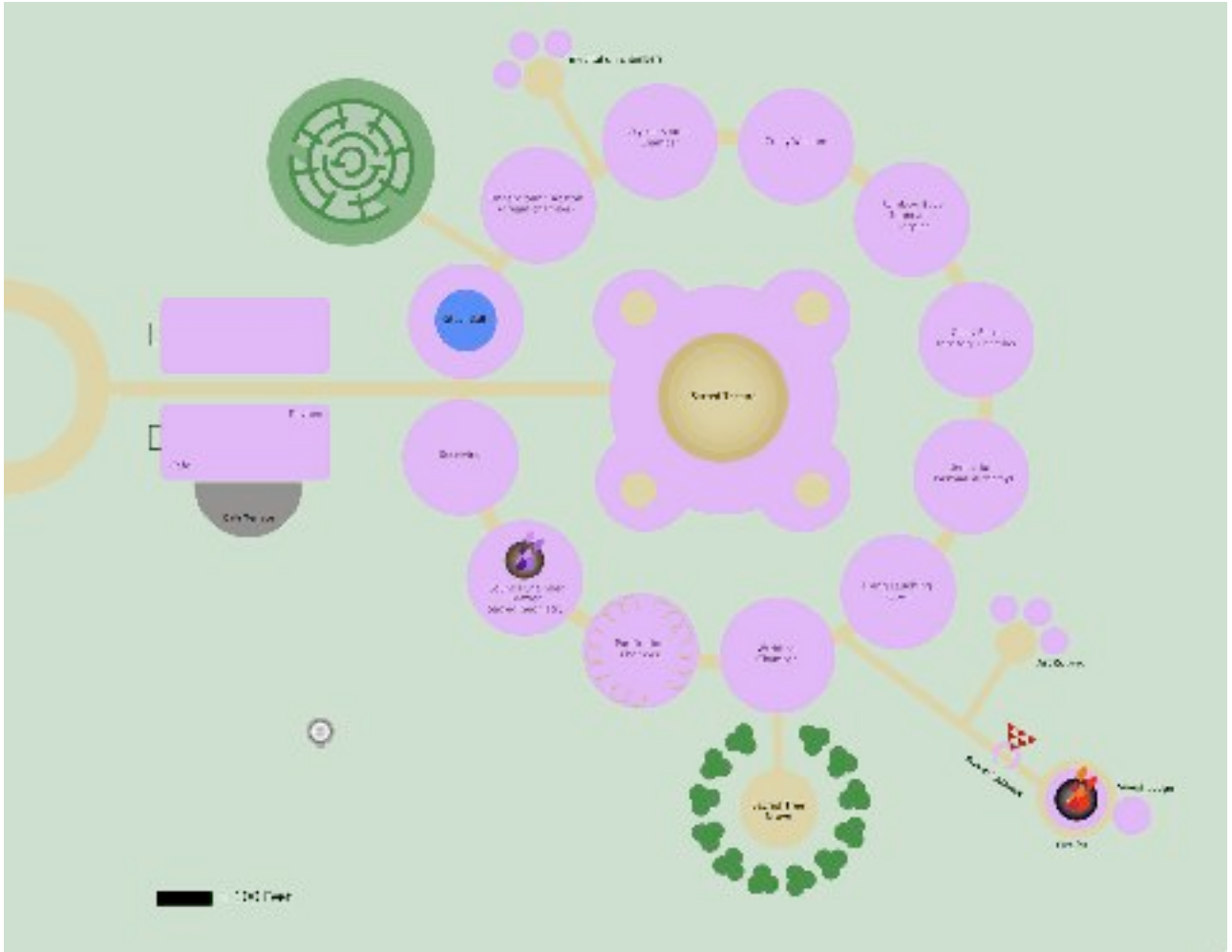


The above stated fact is perhaps the most inspiring and compelling reason for building this divine infrastructure and template in the physical world, that is, that beings are incarnate now who can actually already deliver what is offered here in the briefest of descriptions. This concept is not a fantasy, though it may sound fantastical to the left brain and enculturated mind. These sacred technologies have been brought here from the stars for the awakening of all beings through the physical expression and encodement of those gathered for this purpose. These gathered beings have refined consciousness', unique, perceptually arranged holograms of information encoded in frequencies of light, whose unique gifting will be made tangible and physical in different processes within the mythic playground. We have been promised that as holy innocents, we will be shown how to create anything that we presently may not completely understand technically how to construct. We have been told that this is an unfolding exploration in divine creatorship and that it is part of the evolution of our consciousness', inherent in this paradigm for all involved. Also, as a seer, I perceive that finally divine timing has arrived, because the physical technologies such as holographic sound are now tangibly available to create the highly refined processes to expand consciousness, that are herein described. This is certainly a sign that the time has come for its creation! After sixty years of waiting, I am, needless to say, thrilled!

This description is meant to be a mythic call to those beings who are committed to the creation of The Sanctuary of the Open Heart as part of the divine template unfolding. There are twelve circles of twelve archetypal players in this Divine Game. There are many beings seeded for each position, but each being carries a specific frequency of information that when accurately conjoined, will ignite a sacred geometry and template, a remembrance of divine purpose for all involved and planetarily. Each being in the pattern plays a unique and completely irreplaceable part, in the fulfillment of the divine plan for the geometrical blueprint of the Earth's entering into a higher patterning and spiral of evolution. If these words touch your heart and resonate as truth, please, please respond to this mythic call to share your piece of the puzzle for this magical unfoldment in the Divine Mind!

Please treat this offering with the respect, and loving stewardship intrinsically commanded by its Divine origins. This temple infrastructure is offered up to the Heart of the One in gratuitous praise of the Divine for the redolent joy in its preparation from this
Humble Priestess of the Goddess,
Ariel





Entry to the Sanctuary of the Open Heart

:

Prima Materia: Visita Interiora Terrae Rectificando Invenies Occultum Lapidem: Lux and It Is All Within You

Entry Gates Two Spirals (one inward turning, one outward turning based on golden proportion.) that one literally walks thru to enter. (or stylized two spirals to walk between made of old looking stone).

The following center of the whole project is the five-domed temple which has just been described in this document.

Main Temple Room with four shrine alcoves in the four directions for larger teaching or community ceremonial processes. Shri Yantra of 9 descending triangles in the center of the floor is a mosaic in rose quartz and amethyst tiles that are lit from beneath, with a sacred brazier that is kept lit. This space is used for ceremony and sacred theater.

Temple Honoring The Great Mother (Orientation West. Cosmic Waters) (Frequency of Burgundy) Birthing Chambers, Moon Blood Chambers (Fire mediates earth and water)

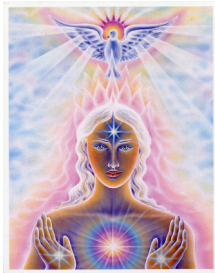


Reclaiming the Rites of Birthing/ Moon Blood/ Offering

Burgundy Receiving Chamber, doubling as a resting sanctuary area for women on their moons.. a silent, silk draped area of receiving. If someone comes into the temple, they make some kind of offering in this first chamber to be received in silence by the mooning women. (The basic geometric is a golden mean spiral on floor.)

Symbols on the wall in this chamber are for contemplation in Moon time. This is a pillowed, round, soft room, deep burgundy. It has a tea service area with foot bathing and priest/ess anointing available to those in this chamber.

Temple Honoring Goddess of Compassion (Orientation West Water) (Frequency of Violet) (Fire on the Water Initiation) (Fire mediates earth and water)



A Large Copper Brazier (eternal flame) in a pool of water surrounded by a light counsel table for 13 or more. The moveable glass table swings back to open the room when necessary to form two half moons on the side of the room.

This is an amethyst chamber, with lighted amethyst tiled floor. Lotus geometry on floor Mantra/ Mudra/ Yantra on the outside walls of the room are found the 13 solid geometries for the 13 aspects of the Divine Feminine such that they can receive light and motion to add to the geometry so that it “comes alive” and reveals its Mystery directly to the initiate.

Reclaiming the Rites of Anointing/Forgiveness

(This chamber is the last chamber before Dream Incubation for offering forgiveness and being anointed by an initiated priest/ess..)

Chambers for Anointing (Found in the Purification area adjacent) (Egyptian Blue Lotus room with a glass window over looking a pool, outside-inside ambience) Altar alcove, Blessing Bowl for entrance, soft silks over tables, great sound system.

Temple Honoring the Priestess (Orientation West Water) (Blue Frequency) (Fire mediates with Earth and water)



Fountains for washing at the entrance.

Moon shaped container holding a waterfall on the outside. If one touches the fonts of water to ready oneself to enter sanctified space or better still after getting into the small pool at the bottom, the door opens.

Reclaiming the Sacred Rite of Bathing as spiritual cleansing, purification and renewal.
Flotation tanks with sound systems for meditation.

Luxurious Bathing Chamber: Lapis baths, ferns, off the bathing area is a steam room, showers, robing and disrobing areas, and lineage capes area, smaller private bathing areas off the main area.

A SW facing sunset time solar cross meditation room that allows the fire of the sun in at sunset with small pin holes perforated in the wall. This chamber is there for anyone coming to council, to sit in meditation before they enter the council chamber.

Temple Honoring the Creator/Destroyer: (Orientation South Fire Red White Black Frequency) (Earth mediates fire and air)



Stain glass door squaring the circle geometry
Reclaiming Rites of Purification. Sauna, massage, herbal wraps, anointing tables, mud packs etc. herbal wraps, salt, honey scrubs etc.

Temple Honoring the Lady of Communion (Orientation South Fire) (Green Frequency) (Earth mediates Fire and Air)



Stain glass entry through a large cube that when you stand in the center of it fills with gold projections of the inner geometries within a cube.. the tetractys, etc... gold sparkling light like inside the Buddha.

Gold and Green Heiros Gamos: Inner Marriage and Wedding Chamber. Indoor Ivy Bower set to receive gold light at sunset. Wedding Chamber of green and gold with Artemis and the Green Man subtly embedded as paintings in the walls.

Reclaiming the Rite of Renewal and Renascence

Green drinks served in the Green Man and lady Gaia area.
Develop other rites of renewal. Renewal of vows for example.. marriage, priestess, etc.
A sacred circle of 13 trees planted FIRST THING upon obtaining the land!

Honoring the Temple of the Muse (Orientation Fire South) (Turquoise Frequency) (Earth mediates fire and air)



Entrance : Unicorn Guardians.. paintings or life sized..
Reclaiming our Innocence in the Rite of Levity Getting the Cosmic Joke
The Muses' Dying Laughing Room run by muses, coyotes, heyoka's and
advanhuntas..where everyone's ego is fair game! This is a Divine Child Play room filled
with wonders for conscious play.

Art Rooms for reclaiming ourselves as creatrixes'. All mediums available including
pottery, paints, easels, collage, sculpture, etc.

Temple Honoring the Goddess of Love (Orientation East Air) (Pink Frequency) (Fire mediates water/air)



Stain glass entry door of the vesica pisces in beveled/stain glass.
The Sensorium

Rounded room, soft embracing, hand washing with hot towels needs to be available..
Soft, sensual room, with scents, touches, tastes, etc. developing sensory acuity, beautiful
music system, soft rounded, movable chairs.
Reclaiming the Rites of Sensual Alchemy

Temple Honoring the Primal Goddess (Orientation East Air) (Flame Frequency) (Fire mediates water and air)



Free standing five descending triangle sculpture to enter this outdoor area into a tunnel..
underground crawling.. coming out to the fire pit, where we reclaim our bodies and our
freedom as wild wo/men.

Reclaiming the Rite of Abandon/Freedom

Dancing with the flames, initiation, Extasis Divinitus, fearlessness, no boundaries, divine union with the elements, all life..

Outdoor fire pit, Medicine wheel, sweat lodge

Temple Honoring the Initiator (Orientation East Air) (Purple Frequency) (Air mediates Earth)



Stain Glass door with a turning octahedron which is an oracle determining their readiness to entry into this chamber.

Reclaiming the Rite of Second Birth: Initiation.

Chambers of Initiation (see the five domed temple description)

Glass Bead Game Room and Initiatory Chamber

Stereograms embedded into the walls, also mirrors that cover cupboards full of inspirational, “holographically relevant to the moment” toys.

Glass bead Game table with sensational sound and light color capabilities

Honoring the Temple of the Wise Woman (Orientation North Earth) (Black and White Frequency) (Air mediates Earth)



Spinning triple triangle on the floor. Meditation until you are altered.
Reclaiming the Rites of Dynamic Balancing
Crystal Balancing room

Sound Healing Chamber: within the crystal chamber. Shri yantra on floor in crystal tiles of quartz and onyx or amethyst and rose quartz. (holographic sound chamber for crystal singing.. best shape for acoustics upright octagonal chamber) suspended on a bed of air.. weightlessness.. bed slowly undulates, light on the ceiling is put through it like dry ice.. plasma room so light can dance in it and then offering crystal singing for recalibration, dimensional journeying and healing.

Herbal apothecary both medicinal and ceremonial herbs available and elixirs available
Silent Meditation Chambers/Shrines to access Stillness/Emptiness

Floating in the Void chamber to develop stillness where you are referenceless in the dark. Also there is an underground kiva beneath the triquetra or in the dreaming temple for this purpose.

Medicine walkways outside made to emphasize certain frequency bands with plants and color frequencies. Grouping herbs and flowers of that archetypal frequency.

Crones Nest: In a tree house preferably. Initiation Chamber with Crones who don't care whatsoever about your ego. They display merciless compassion as crazy wisdom players, all leading the advanced players eventually being taken into the initiation of the Dying Laughing Room!

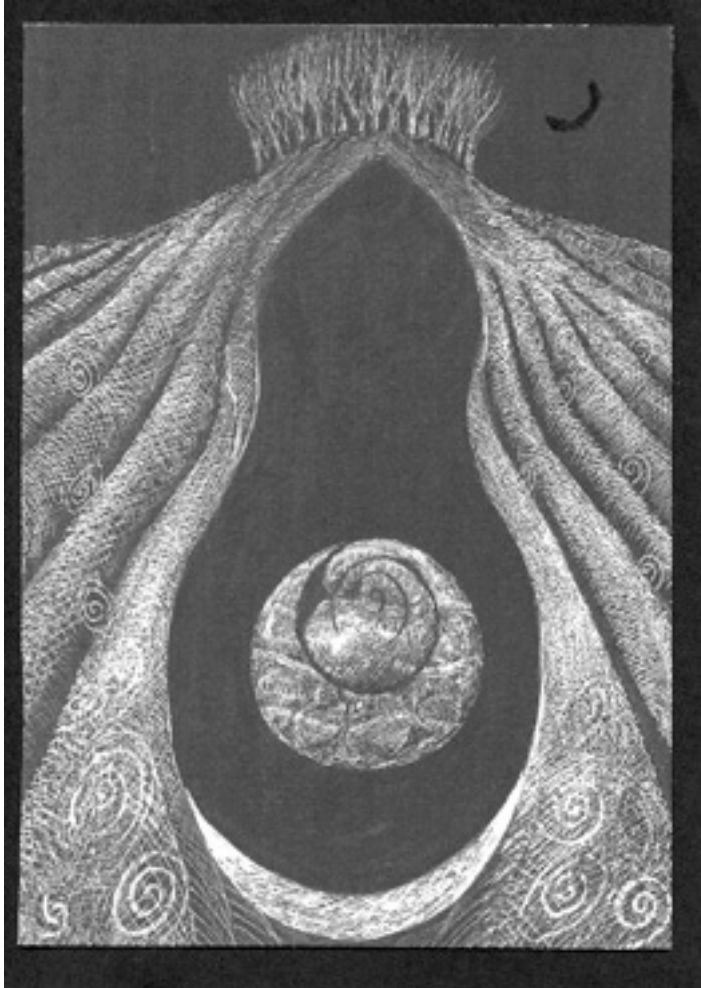
Temple honoring the Weaver (Orientation North Earth) (Magenta Frequency) (Air mediates Earth and Fire)



Eight Spoked Wheel that spins to enter and offers an oracle while doing so
Reclaiming the Rite of Lucid Dreaming and Dream Incubation
Three types: 1) in the earth in Holkas like “clay ovens” in the earth,
2) raised dais’ off the ground.. with a skylight to the night sky or open to sky
or tree houses for dream incubation.
3) The Abaton, underground dreaming chambers monitored by conscious dream
priest/esses for underworld healing work

Crop circle geometrics on the walls and other dream symbols.
Outdoor labyrinth (only if an underground water source is available for the appropriate
magnetics to support its placement.)

Temple Honoring the Queen of Death (Orientation North Earth) (Black Frequency) (Air mediates Earth)



Five Pointed Star you walk through to enter.
Plant a Yew Tree by this area early on in the project's development.
Reclaiming Death/Transitioning as a Sacred Rite"
7 Headed Cobra statue in this room

Work with tuning DNA to develop a strong exit strategy for dying consciously. Virtual reality chamber for development of the ka body and teaching this transition technique for dying consciously.

The Rainbow Body Room: Chambers for Celebrating the lives and passage of those who are or have transitioned.. large Aloleah painting meditation piece 6 feet or more.

Hospice space for support of conscious dying, to be led consciously in the process by transition priest/ess'. Space to create art for cremation vessels for peoples' passage/transition.

Temple Honoring the Alchemical Face of the Goddess



(Center Sipapu Point of Emergence) Aether (Rainbow Frequency)

Central point on the land has a triquetra built into the earth.. lifting lid reveals underground sound/ meditation kiva.

Reclaiming the Rite of Transmutation with Sacred Theater in the central domed temple
Central Chamber dome that can open to the night sky, acoustically resonant, built with the shri yantra geometry on the floor

Sensational sound, light and color capabilities

Holds about 50-100 people

Shri yantra geometry embedded mosaic of rosequartz and amethyst

Living orchids everywhere

Five shrines to the directions and elements

Outside Area of Temple Grounds:



Outdoor gardens based on sacred geometry and medicinal qualities of herbs, trees and plants. Created with the full cooperation of the devic and faerie realms.

An Organic Cafe and Coffee/Tea House: “Singing Cells” or “Restaurant at the End of the Universe” or Extasis Divinitus

Aphrodite’s Closet: Mythic Persona Enhancement and One Stop Altar Shop for items that will assist them in remembering their Essential Selves.

13 lineage cape colors, silk gowns, and scarves with appropriate symbols to do archetypal “make overs” that support beings stepping fully into and remembering in daily life their mythic dimensions and archetypal aspects.